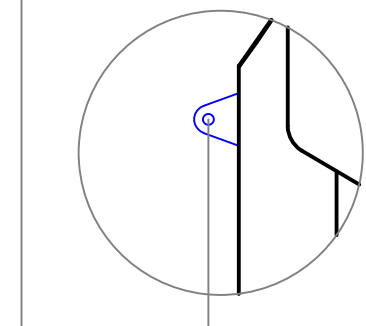
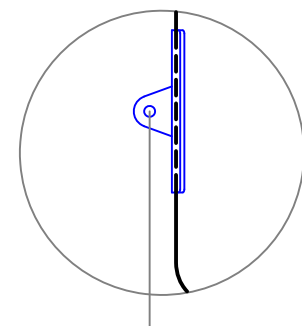


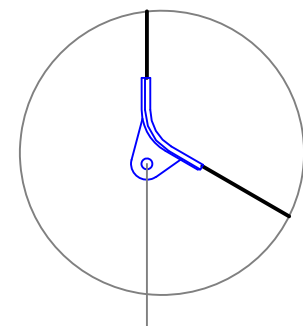
Upper Attachment Options



Leg-Lug
Drawing 30489501-1

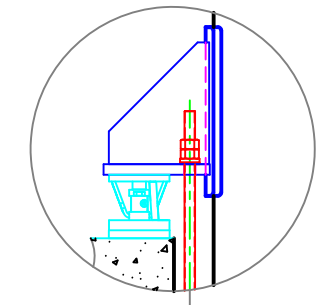


Tank-Lug, Wall
Drawing 30489501-2



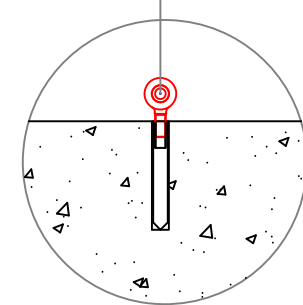
Tank-Lug, Corner
Drawing 30489501-2

Bracket-Rod
Drawing 30489501-3

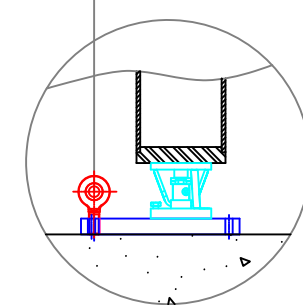


- Notes: Dimension in mm [inches]
1. All information pertaining to METTLER TOLEDO's RapidCal™ shall be treated confidentially.
 2. Calibration Modules should stand vertically within 0.5 degree when assembled to the tank.
 3. The attachment points to the tank and foundation must withstand the Max. Calibration Force (CFm) with a suitable factor of safety. Reinforce the attachment points as necessary.
 4. $CFm (lb) = Scale Capacity (lb) / N$ $CFm (Newtons) = g * Scale Capacity (kg) / N$
where $g = 9.81 m/s^2$ and $N =$ number of Calibration Modules used in the calibration.
 5. Detail 1 shows minimum distance from the Calibration Module center line(CL) to tank scale or other obstacles on 4 sides; it can be rotated +/- 90 degrees from the position shown. Provide for operator access also.
 6. Extend length where indicated by insertion of M20x1.5 threaded rod. For safety, use only MT-approved high-strength threaded rod and hardware. Consult MT if a shorter arrangement is required.
 7. Dimension to ground is 55-85 mm [2.17-3.35 in] depending on lower attachment, see relevant drawing.

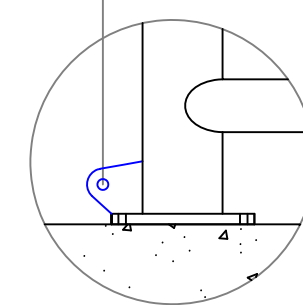
Lower Attachment Options



Rod-End/Concrete
Drawing 30489501-4

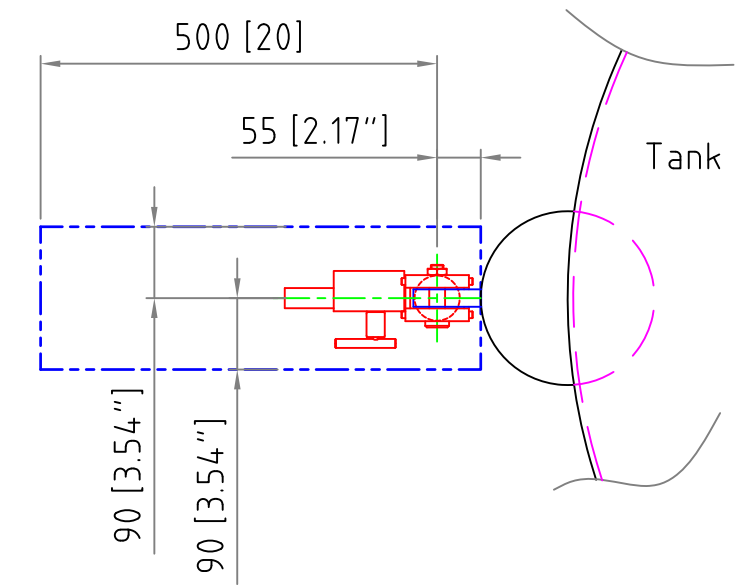


Rod-End/Sub-Plate
Drawing 30489501-5



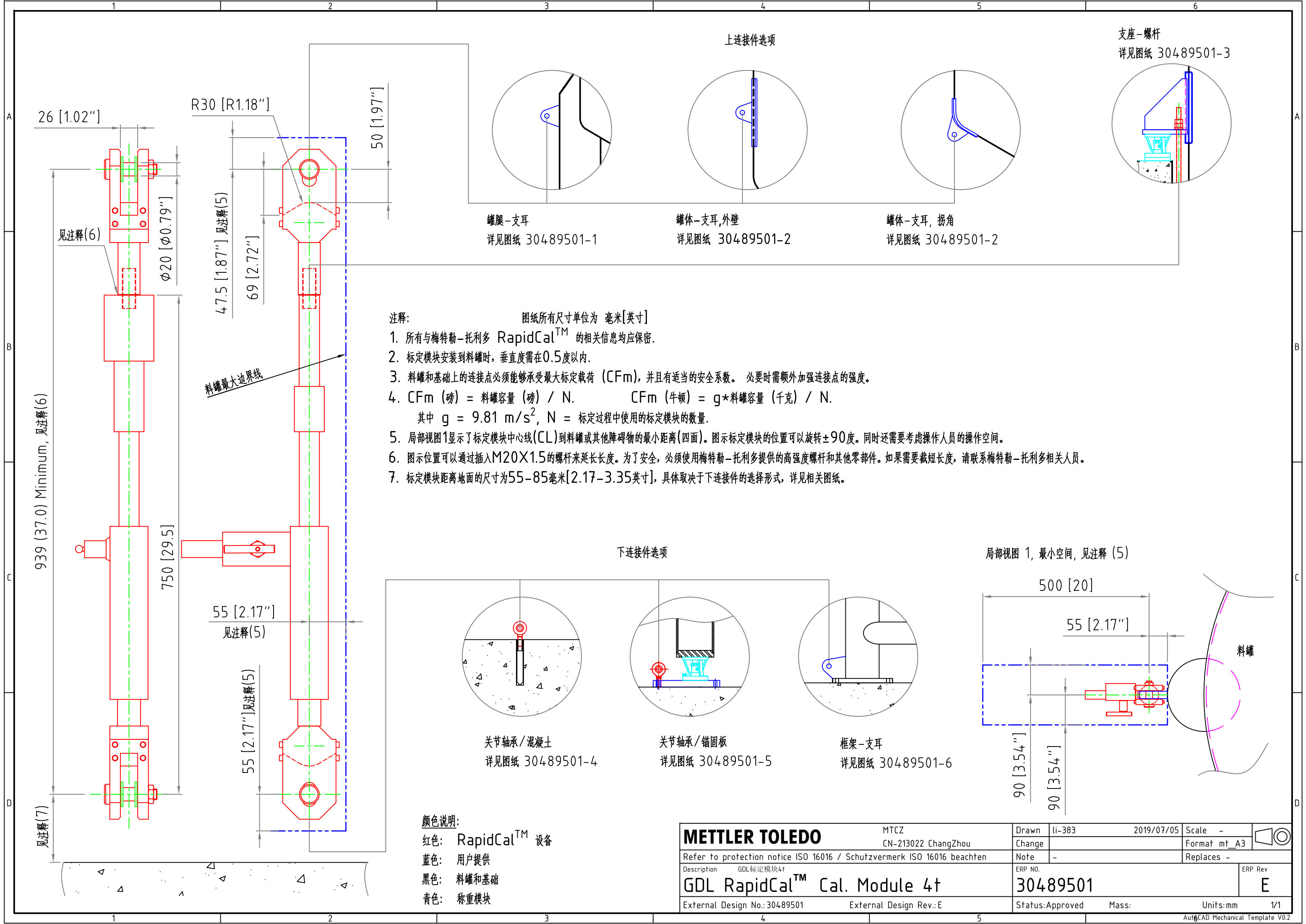
Sub-Frame-Lug
Drawing 30489501-6

Detail 1, Minimum Clearance, See (5)



Color Key:
Red: RapidCal™ Equipment
Blue: Customer provided
Black: Tank and foundation.
Cyan: Weigh Module

METTLER TOLEDO		MTCZ	Drawn	li-383	2019/07/05	Scale	-
CN-213022 ChangZhou			Change			Format	mt_A3
Refer to protection notice ISO 16016 / Schutzvermerk ISO 16016 beachten			Note	-		Replaces	-
Description GDL 标定模块4t			ERP NO.	30489501		ERP Rev	E
GDL RapidCal™ Cal. Module 4t			Status:Approved	Mass:		Units:mm	1/1
External Design No.:30489501		External Design Rev.:E					



- 注释: 图纸所有尺寸单位为 毫米[英寸]
1. 所有与梅特勒-托利多 RapidCal™ 的相关信息均应保密。
 2. 标定模块安装到料罐时, 垂直度需在0.5度以内。
 3. 料罐和基础上的连接点必须能够承受最大标定载荷 (CFm), 并且有适当的安全系数。必要时需额外加强连接点的强度。
 4. $CFm \text{ (磅)} = \text{料罐容量 (磅)} / N$ $CFm \text{ (牛顿)} = g * \text{料罐容量 (千克)} / N$
其中 $g = 9.81 \text{ m/s}^2$, $N = \text{标定过程中使用的标定模块的数量}$ 。
 5. 局部视图1显示了标定模块中心线(CL)到料罐或其他障碍物的最小距离(四面)。图示标定模块的位置可以旋转±90度。同时还需要考虑操作人员的操作空间。
 6. 图示位置可以通过插入M20X1.5的螺杆来延长长度。为了安全, 必须使用梅特勒-托利多提供的高强度螺杆和其他零部件。如果需要截短长度, 请联系梅特勒-托利多相关人员。
 7. 标定模块距离地面的尺寸为55-85毫米[2.17-3.35英寸], 具体取决于下连接件的选择形式, 详见相关图纸。

颜色说明:
红色: RapidCal™ 设备
蓝色: 用户提供
黑色: 料罐和基础
青色: 称重模块

METTLER TOLEDO	MTCZ	Drawn	li-383	2019/07/05	Scale	-	
	CN-213022 ChangZhou	Change			Format	mt_A3	
Refer to protection notice ISO 16016 / Schutzvermerk ISO 16016 beachten		Note	-		Replaces		-
Description GDL 标定模块4t		ERP NO.					ERP Rev
GDL RapidCal™ Cal. Module 4t		30489501					E
External Design No.:30489501		External Design Rev.:E		Status:Approved	Mass:	Units:mm	1/1