

User Instructions  
Add-On Instruction (AOI)  
IND780\_IntDiv\_Input\_Data

This AOI is intended to be used with the Mettler Toledo Terminal IND780, software version 5 or greater. The AOI was created using Allen-Bradley RSLogix5000 version 16 and is intended for RSLogix5000 version 16 or greater.

**User requirements:**

Users will need an understanding the IND780 Terminal PLC Interface Data Types and Message Slot data layout.

**Applicable Mettler Toledo Terminal PLC interfaces:**

Allen Bradley Remote I/O (RIO)

ControlNet (using the RSLogix5000 generic module profile, input data INT)

EtherNet/IP (using the RSLogix5000 generic module profile, input data INT)

**Applicable Mettler Toledo PLC Data Formats:**

Integer

Divisions

**AOI provides:**

Conversion of integer weight data into an RSLogix5000 Data Type REAL using a parameter input of the scale terminal Increment Size; same as used for scale calibration. Or conversion of divisions weight data into an RSLogix5000 Data Type REAL using a parameter input of the scale terminal Increment Size and the parameter input Use\_Divisions.

Conversion of the Scale Status integer into 16 separate RSLogix5000 Data Type BOOL.

Within the RSLogix5000 application program one AOI is used for each input Message Slot.

**Adding AOI to RSLogix5000:**

Within the RSLogix5000 in the Configuration window right click on Add-On Instructions; click on Import Instruction; click on IND780\_IntDiv\_Input\_Data.L5X; click OK. AOI will load creating the Add-On Instruction, a Data Type of the same name as the AOI and a new Tab to the Instruction Types over the programming screen window. The new Data Type will be included in any screen requiring Data Type entry. The Instruction will also appear in the window screen when keyboard inserting a new instruction to the program logic.

# User Instructions

## Add-On Instruction (AOI)

### IND780\_IntDiv\_Input\_Data

Adding AOI to RSLogix5000 application program:

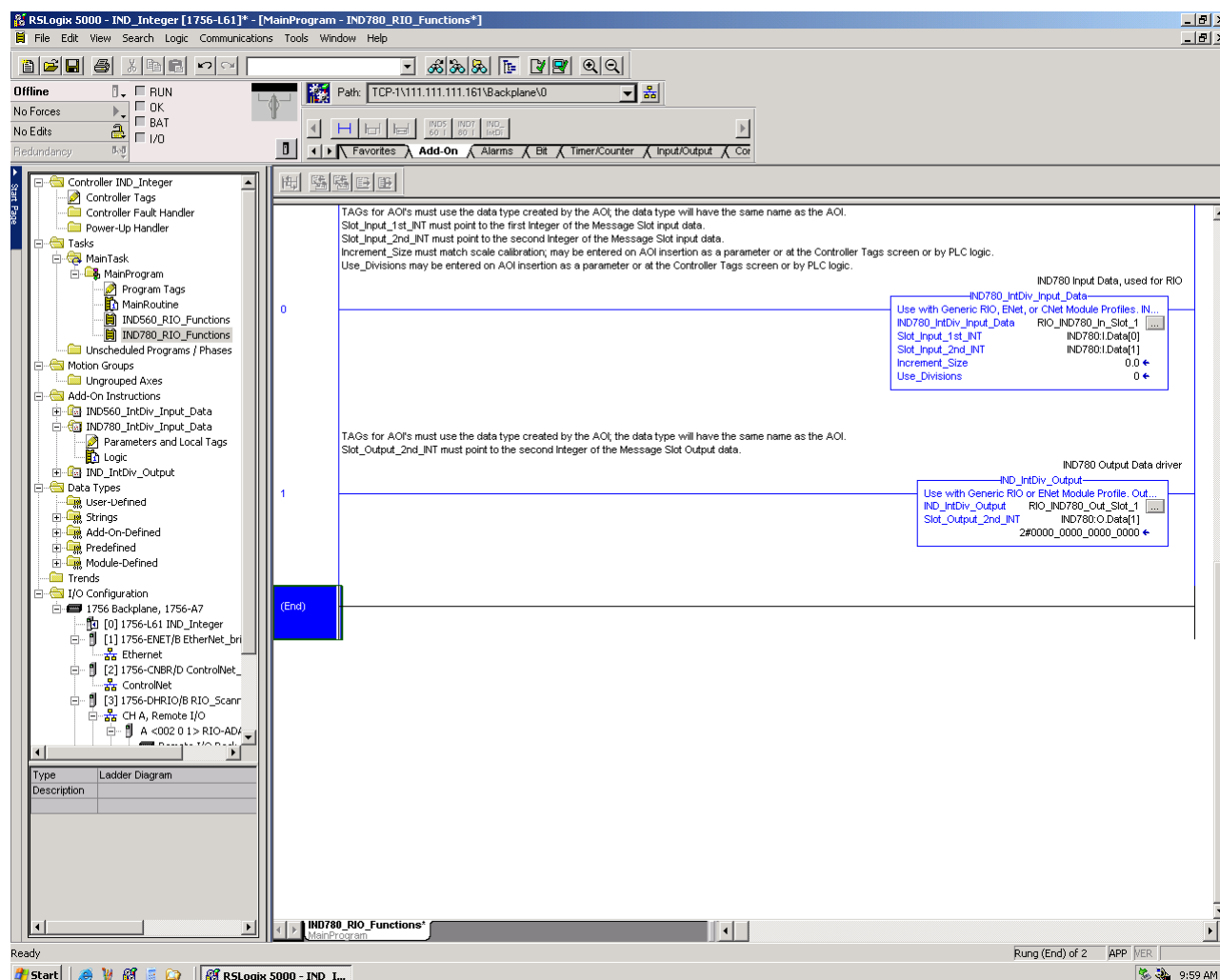
A Tag must be associated to the AOI when inserting into the application program; this tag must use the RSLogix5000 Data Type of the same name as the AOI (IND780\_IntDiv\_Input\_Data).

The screenshot displays the RSLogix 5000 software interface. The left pane shows the project tree with the 'Controller Tags' folder expanded, listing various tags and their data types. The main pane shows the 'Tag Table' for the 'IND\_Integer' controller, listing tags and their associated data types and descriptions.

Name	Alias For	Base Tag	Data Type	Style	Description
IND560:I			AB:RIO_8IOGROUP:1:0		
IND560:O			AB:RIO_8IOGROUP:0:0		
IND780:I			AB:RIO_8IOGROUP:1:0		
IND780:O			AB:RIO_8IOGROUP:0:0		
Local:3:I			AB:1756_DHRIO:1:0		
Local:4:I			AB:1756_DNB_20Bytes:1:0		
Local:4:O			AB:1756_DNB_20Bytes:0:0		
Local:4:S			AB:1756_DNB_Status_64B...		
IND560_In_Slot_1			IND560_IntDiv_Input_Data		IND560 Input Data, used for RIO or ENet. One per Message Slot
IND560_In_Slot_2			IND560_IntDiv_Input_Data		IND560 Input Data, used for RIO or ENet. One per Message Slot
IND560_In_Slot_3			IND560_IntDiv_Input_Data		IND560 Input Data, used for RIO or ENet. One per Message Slot
IND560_In_Slot_4			IND560_IntDiv_Input_Data		IND560 Input Data, used for RIO or ENet. One per Message Slot
IND780_In_Slot_1			IND780_IntDiv_Input_Data		IND780 Input Data, used for RIO, Generic ENet or Cnet. One per Message Slot
IND780_In_Slot_1.EnableIn			BOOL	Decimal	IND780 Input Data, used for RIO, Generic ENet or Cnet. One per Message Slot...
IND780_In_Slot_1.EnableOut			BOOL	Decimal	IND780 Input Data, used for RIO, Generic ENet or Cnet. One per Message Slot...
IND780_In_Slot_1.Increment_Size			REAL	Float	IND780 Input Data, used for RIO, Generic ENet or Cnet. One per Message Slot...
IND780_In_Slot_1.Use_Divisions			BOOL	Decimal	IND780 Input Data, used for RIO, Generic ENet or Cnet. One per Message Slot...
IND780_In_Slot_1.Weight			REAL	Float	IND780 Input Data, used for RIO, Generic ENet or Cnet. One per Message Slot...
IND780_In_Slot_1.Feed			BOOL	Decimal	IND780 Input Data, used for RIO, Generic ENet or Cnet. One per Message Slot...
IND780_In_Slot_1.Fast_Feed			BOOL	Decimal	IND780 Input Data, used for RIO, Generic ENet or Cnet. One per Message Slot...
IND780_In_Slot_1.Tolerance_OK			BOOL	Decimal	IND780 Input Data, used for RIO, Generic ENet or Cnet. One per Message Slot...
IND780_In_Slot_1.Under			BOOL	Decimal	IND780 Input Data, used for RIO, Generic ENet or Cnet. One per Message Slot...
IND780_In_Slot_1.Over			BOOL	Decimal	IND780 Input Data, used for RIO, Generic ENet or Cnet. One per Message Slot...
IND780_In_Slot_1.Compar_3			BOOL	Decimal	IND780 Input Data, used for RIO, Generic ENet or Cnet. One per Message Slot...
IND780_In_Slot_1.Compar_2			BOOL	Decimal	IND780 Input Data, used for RIO, Generic ENet or Cnet. One per Message Slot...
IND780_In_Slot_1.Compar_1			BOOL	Decimal	IND780 Input Data, used for RIO, Generic ENet or Cnet. One per Message Slot...
IND780_In_Slot_1.Enter_Key			BOOL	Decimal	IND780 Input Data, used for RIO, Generic ENet or Cnet. One per Message Slot...
IND780_In_Slot_1.Discrete_In_1			BOOL	Decimal	IND780 Input Data, used for RIO, Generic ENet or Cnet. One per Message Slot...
IND780_In_Slot_1.Discrete_In_2			BOOL	Decimal	IND780 Input Data, used for RIO, Generic ENet or Cnet. One per Message Slot...
IND780_In_Slot_1.Discrete_In_3			BOOL	Decimal	IND780 Input Data, used for RIO, Generic ENet or Cnet. One per Message Slot...
IND780_In_Slot_1.Motion			BOOL	Decimal	IND780 Input Data, used for RIO, Generic ENet or Cnet. One per Message Slot...
IND780_In_Slot_1.Net_Mode			BOOL	Decimal	IND780 Input Data, used for RIO, Generic ENet or Cnet. One per Message Slot...
IND780_In_Slot_1.Update_InProcess			BOOL	Decimal	IND780 Input Data, used for RIO, Generic ENet or Cnet. One per Message Slot...
IND780_In_Slot_1.Data_OK			BOOL	Decimal	IND780 Input Data, used for RIO, Generic ENet or Cnet. One per Message Slot...
IND780_In_Slot_2			IND780_IntDiv_Input_Data		IND780 Input Data, used for RIO, Generic ENet or Cnet. One per Message Slot
IND780_In_Slot_3			IND780_IntDiv_Input_Data		IND780 Input Data, used for RIO, Generic ENet or Cnet. One per Message Slot
IND780_In_Slot_4			IND780_IntDiv_Input_Data		IND780 Input Data, used for RIO, Generic ENet or Cnet. One per Message Slot
IND780_Out_Slot_1			IND_IntDiv_Output		IND780 Output Command interface

# User Instructions Add-On Instruction (AOI) IND780\_IntDiv\_Input\_Data

Within the RSLogix5000 application program insert the AOI where desired. The first requirement will be the Tag created earlier.



*Slot\_Input\_1st\_INT* and *Slot\_Input\_2nd\_INT* are required Input Parameters. *Increment\_Size* and *Use\_Divisions* are also Input Parameters but need not an entry when AOI is inserted in the application program; these two Parameters are visible in the AOI Tag as elements of the Tag.

*Slot\_Input\_1st\_INT* is the Data Type INT and must be pointed to the first INT of the input Message Slot from the IND780 terminal into the PLC; this will always be an even number (0, 2, 4, 6 and so on) of the input data array.

*Slot\_Input\_2nd\_INT* is the Data Type INT and must be pointed to the second INT of the input Message Slot from the IND780 terminal into the PLC; this will always be an odd number (1, 3, 5, 7 and so on) of the input data array.

User Instructions  
Add-On Instruction (AOI)  
IND780\_IntDiv\_Input\_Data

*Increment\_Size* is the Data Type REAL. The increment size entered must match the scale calibration size to assure correct conversion of the input weight data to a REAL. The increment size may be entered when the AOI is inserted and it will be a constant unless the PLC logic changes the increment size. The increment size may be entered at the Tag monitor screen and will be a constant unless the PLC logic changes the increment size. Be sure to save the program to assure the constants are saved as part of the program. The increment size may be entered into the Tag element *Increment\_Size* by the program logic if desired.

*Use\_Divisions* is the Data Type BOOL. This Parameter must be set to one (1) or ON if the weight input data from the terminal is Data Format Divisions. The *Use\_Divisions* parameter may be entered when the AOI is inserted and it will be a constant unless the PLC logic changes the state of *Use\_Divisions*. The *Use\_Divisions* parameter may be entered at the Tag monitor screen and will be a constant unless the PLC logic changes the state of *Use\_Divisions*. Be sure to save the program to assure the constants are saved as part of the program. The state of *Use\_Divisions* may be controlled by the program logic if desired.

# User Instructions

## Add-On Instruction (AOI)

### IND780\_IntDiv\_Input\_Data

#### User edit of the AOI:

The AOI is not protected and the Parameters and Logic may be edited by the user if desired.  
Below is an insert of the AOI Parameter screen.

