

FreshStar Hanging Compact, Hygienic, Touch Sensitive



Compact Structure

FreshStar Hanging Scale has a compact structure to fit better on the counter and create a fluid interaction between shoppers and shopkeepers. The smooth shape of the housing makes it easy to clean.



Highly Sensitive Touch Screen

The highly sensitive touch screen ensures easy operation in the specified application. The 15.6-inch touch screen provides an excellent user interface with the integration of rich off-scale software applications.



Economic Customer Display

The economic 11.6-inch customer display can maximize the customer shopping experience and support advertisements display when the scale is free of transactions.



Multiple Choices of Printers

FreshStar Hanging scale provides various printer options for tickets and labels to fit different user scenarios. The optional linerless printer can support variable-length label printing and commit to environmental friendliness.



FreshStar Hanging Touch hanging scale

FreshStar Hanging is a touch hanging scale that is compact, hygienic and touch-sensitive. It can meet different user scenarios for ticket and label printing. The compact hanging structure can save valuable counter space and the stainless steel platter ensures safe and hygienic food contact. The large touch sensitive operator display provides high resolution image and text display for an excellent user experience.

METTLER TOLEDO

Technical Data

FreshStar Hanging

Operator Display

15.6-inch capacitive touch screen
Screen resolution: 1920x1080 pixels

Customer Display

11.6-inch customer display
Screen resolution: 1366x768 pixels

Operating Temperature

-10°C - 40°C

CPU: RK3568

Printer

Printing width: 56mm
Paper width: 44 - 62mm
Paper speed: up to 150mm/s
Printer resolution: 8 dots/mm
2-inch ticket printer
- Roll diameter: 70mm
2-inch linerless printer
- Roll diameter: 120mm
2-inch label printer
- Roll diameter: 120mm

Data Storage

2GB LPDDR4 + 16GB eMMC

Operating System

Linux

Scale Software

ArchOne

Interfaces and Protocols

Ethernet interface(10/100/1000M compatible)
1 x RJ11 Cash drawer (12V/24V)
3 x USB 2.0 HS
1 x USB 3.0 SS
IEEE 802.11 a/b/g/n/ac standard

Power Supply

100 - 240 V AC, 50 / 60 Hz

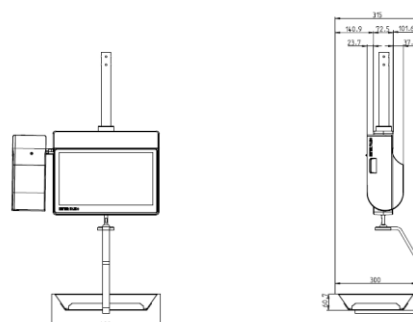
Housing

Impact-resistant housing made of die-cast aluminum

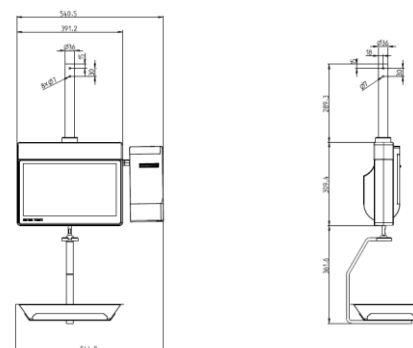
Housing surface with non-stick coating

Color: Black

Weighing range	6 kg / 15 kg
Graduation	2 g / 5 g
Minimum load	40 g



Dimension in mm



Dimension in mm

www.mt.com/retail

For more information

METTLER TOLEDO Group

Retail Division

Local contact: www.mt.com/contacts

Subject to technical changes

©2025 Mettler-Toledo

Mettler-Toledo is consistently dedicated to the improvement of its product functionalities. Consequently, technical specifications of the products may be subject to change. In such instances, please note that no further notice will be provided.

